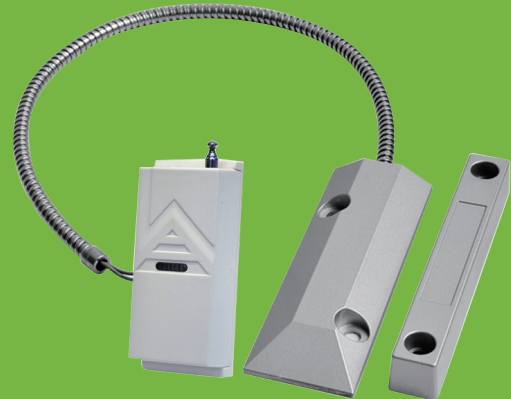


Magnetic door contact for access control and burglar alarm systems



MC-SK03W-2

What is Magnetic Reed Switch?

The reed switch is an electrical switch operated by an applied magnetic field. ...

The switch may be actuated by an electromagnetic coil, making a reed relay, or by bringing a permanent magnet near it.



When the magnetic field is removed, the contacts in the reed switch return to their original position.

What are magnetic reed switches used for?

A reed switch is an electromagnetic switch used to control the flow of electricity in a circuit.

They are made from two or more ferrous reeds encased within a small glass tube-like envelope, which become magnetised and move together or separate when a magnetic field is moved towards the switch.

Specifications

	Features: strong vibration resistance
	Shell material: zinc alloy (surface electroplating treatment)
	Working distance: 40-60mm
	Switch form: NC-Normally Close (open circuit alarm) NO-Normally Open (channel alarm)NO+NC
	Fixed form: screw mount
	Current/Voltage/Power: 0.5A/100V/10w
	Packing: 1 set/bag
	Type: Compatible with SK series anti-theft alarm controller
	Distance: Open area up to 100 meters
	Transmitting frequency: 315MHz433MNHZ (optional)
	Coded integrated circuit: 2260
	Oscillation resistance value: 156M, 106M
Base voltage: DC12V	
Current consumption: static ≤5uA, when transmitting ≤25mA	
Action distance: ≥15≤25mm	

Dimensions

